

18.02

LINCOLN HIGH SCHOOL  
STAGE 1 - ADMINISTRATION & SCIENCE



a t h f i e l d  
a r c h i t e c t s  
l i m i t e d  
a t h f i e l d  
a r c h i t e c t s  
l i m i t e d  
a t h f i e l d



Te Kura Tuarua o Waihora  
Lincoln High School

100% Developed Design School  
Presentation

28 April 2023

[athfieldarchitects.co.nz](http://athfieldarchitects.co.nz)

65 Cambridge Terrace  
Christchurch 8013  
PO Box 3724  
Christchurch 8140  
T +64 3 377 2007

# 1.0 APPROVED RE-VALIDATED MASTERPLAN

## STAGE 3 COMPLETION








18.02 Te Kura Tuarua o Waihora  
Lincoln High School - Stage 1  
100% School Presentation  
28 April 2023

Page 8 Athfield Architects Limited

Scale 1:1000 @ A3

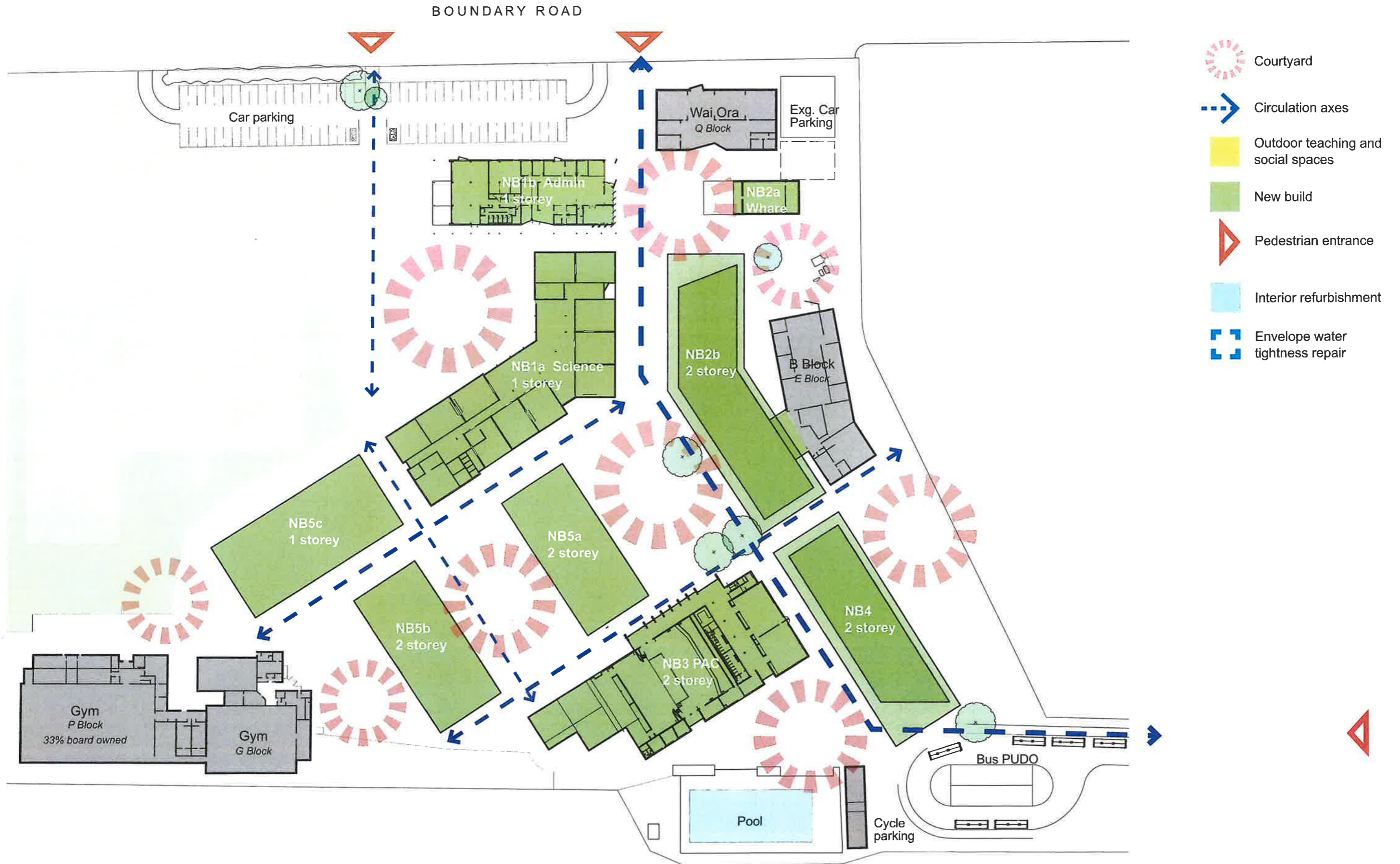


-  Courtyard
-  Circulation axes
-  Outdoor teaching and social spaces
-  New build
-  Pedestrian entrance
-  Interior refurbishment
-  Envelope water tightness repair
-  Buildings to be demolished



# 1.0 APPROVED RE-VALIDATED MASTERPLAN

## ALL 5 STAGES COMPLETED



# 1.0 STAGE 1 - SITE PLAN

## COMPLETION OF STAGE 1 SCOPE



18.02 Te Kura Tuarua o Waihora  
Lincoln High School - Stage 1  
100% School Presentation  
28 April 2023

Page 14 Athfield Architects Limited

Scale 1:500 @ A3

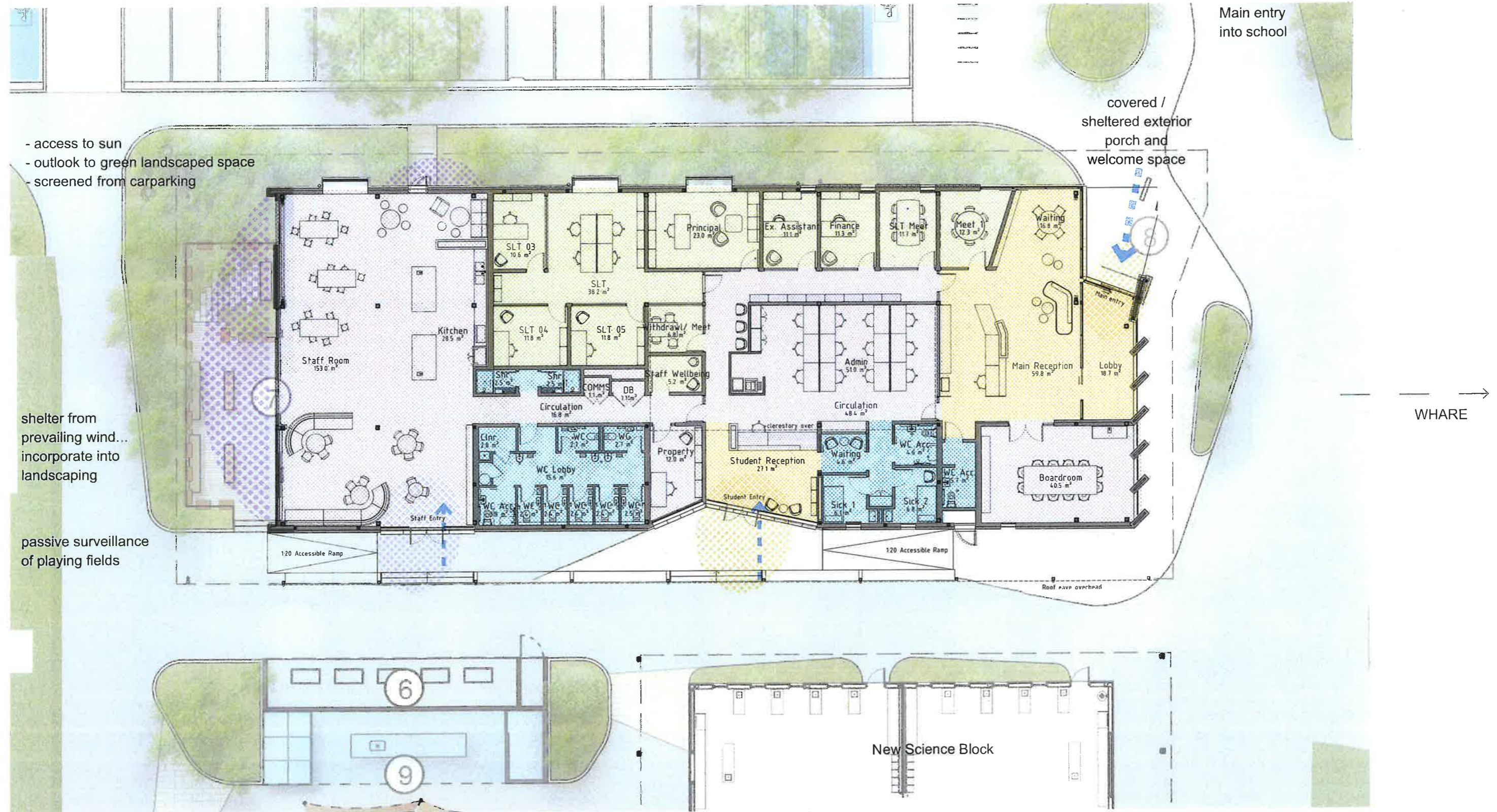


# 2.0 ADMINISTRATION BUILDING FLOOR PLAN



18.02 Te Kura Tuarua o Waihora  
Lincoln High School - Stage 1  
100% School Presentation  
28 April 2023

Page 15 Athfield Architects Limited  
Scale 1:200 @ A3



- access to sun
- outlook to green landscaped space
- screened from carparking

shelter from prevailing wind...  
incorporate into landscaping

passive surveillance  
of playing fields

covered /  
sheltered exterior  
porch and  
welcome space

Main entry  
into school

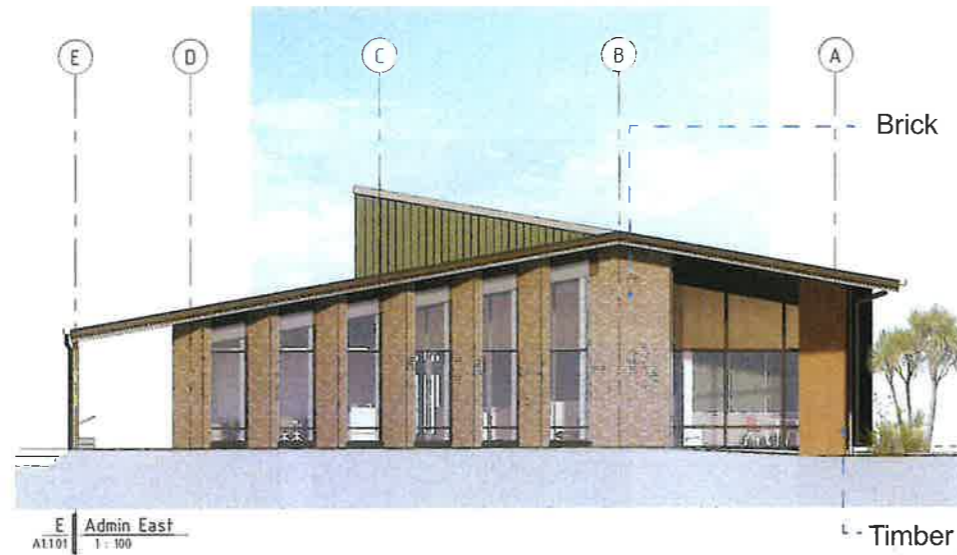
WHARE

New Science Block

6

9

# 2.0 ADMINISTRATION BUILDING ELEVATIONS



E Admin East  
A1101 1:200



W Admin West  
A1101 1:200

- Timber panel with integrated cultural narrative

- Aluminium cladding
- Profile metal roofing
- Thermally broken aluminium window joinery



- Profile metal roofing over warm roof
- Fibre cement soffit



L 15550 Ground

S Admin South  
A1101 1:200

- Profile metal roofing over warm roof clerestory
- Aluminium cladding

# 2.0 ADMINISTRATION BUILDING PROPOSED EXTERIOR RENDERS



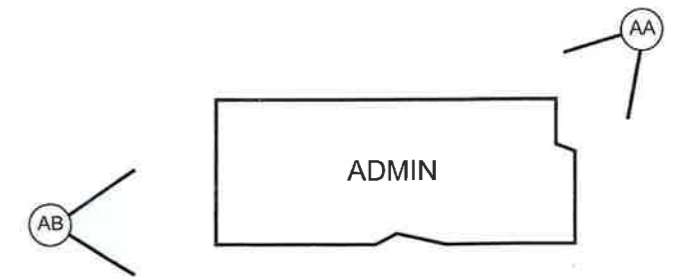
*Timber panel and bespoke brick pattern at entrance to be developed through cultural narrative process*



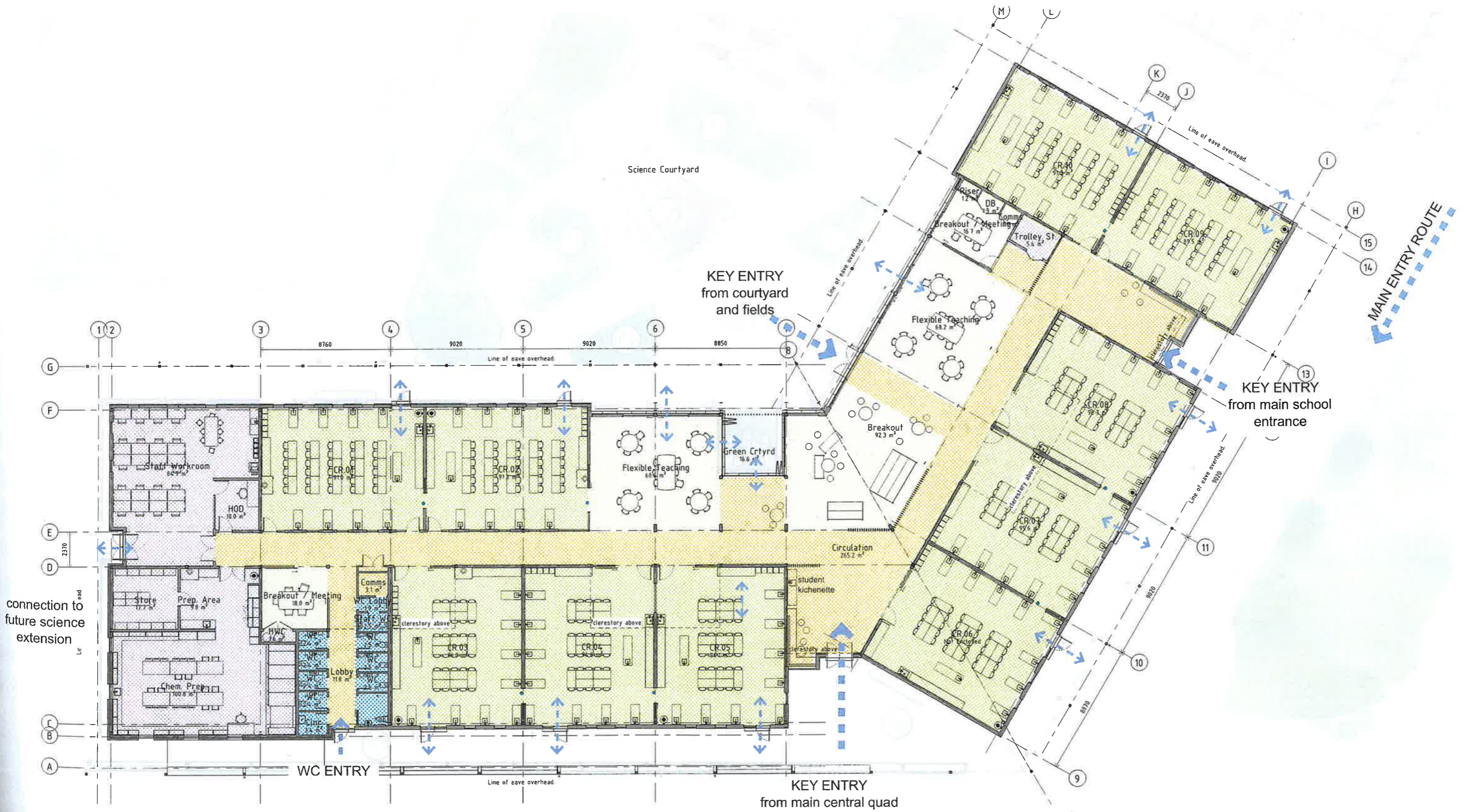
*View AA: Entrance to Admin Block from main school entry*



*View AB: Staff room deck/terrace area, view looking back at Admin block from field.*

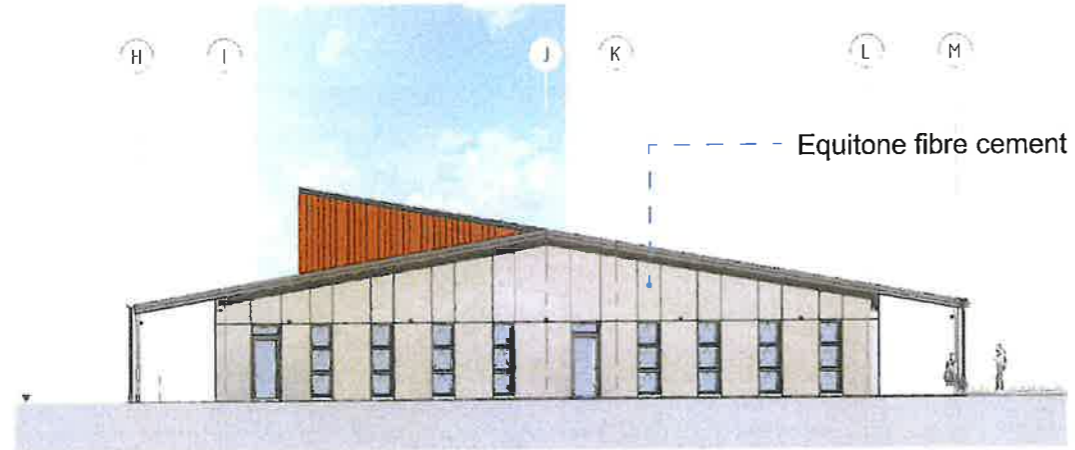


# 3.0 SCIENCE BUILDING FLOOR PLAN

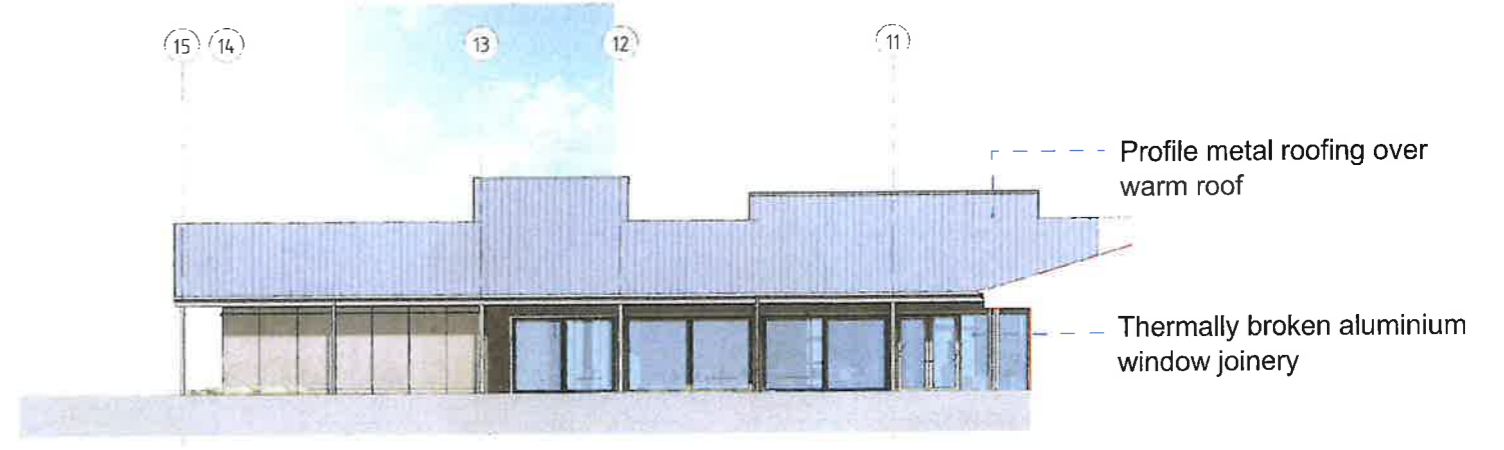




# 3.0 SCIENCE BUILDING ELEVATIONS



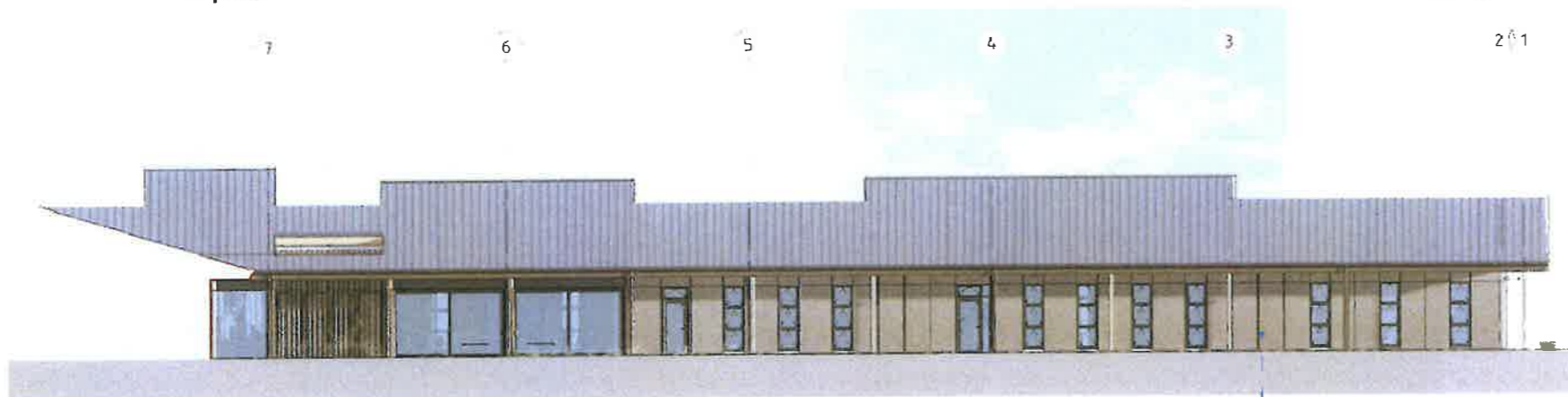
1 Science - East Elevation  
AR 29 1:125



2 Science - North Elevation - A  
AR 29 1:125

Profile metal roofing over warm roof

Thermally broken aluminium window joinery



3 Science - North Elevation - B  
AR 29 1:125



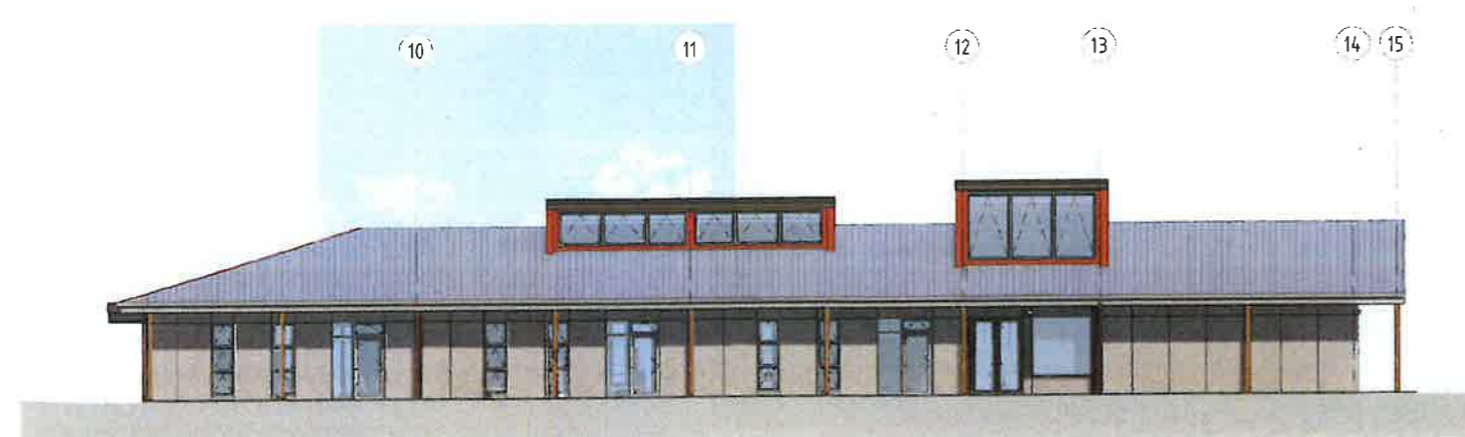
4 Science - West Elevation  
AR 29 1:125

Aluminium cladding

Brick potentially extended



1 2



5 Science - South Elevation - A  
AR 29 1:125

# 3.0 SCIENCE BUILDING PROPOSED EXTERIOR RENDERS



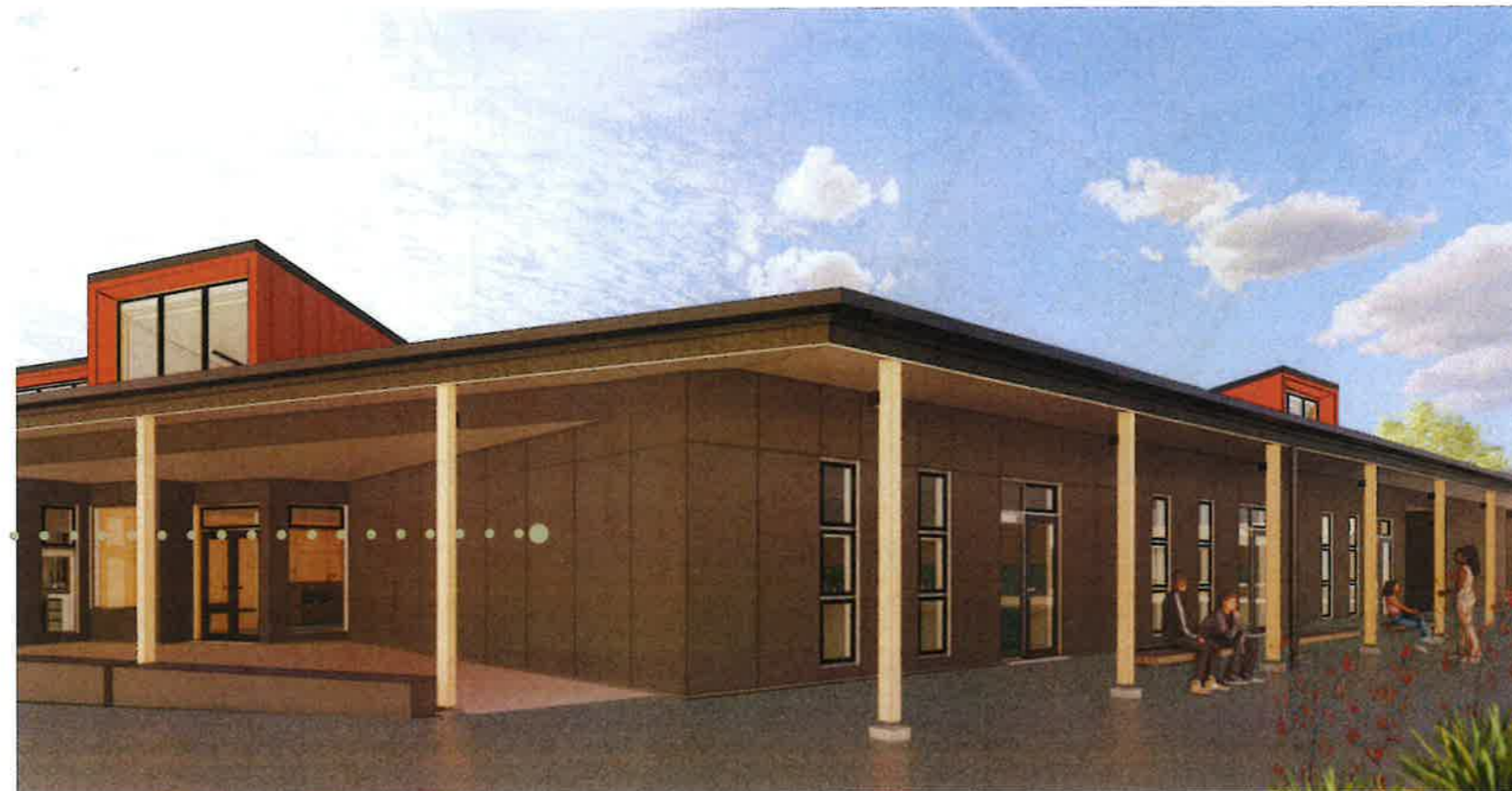
Science block viewed across Science Courtyard from north-western corner of Admin building



Landscaped learning and recreational spaces, swales for water management



selected areas of textured fibre-cement cladding adjacent to key main entry thresholds to be developed through cultural narrative process



Entrance to Science block from future central campus main courtyard